

FlexyLIFT

YOUR FLEXIBLE HYDRAULIC SOLUTION

KLEEMANN

Your 1st Choice in Lifts

YOUR FLEXIBLE HYDRAULIC SOLUTION

FlexyLIFT means **flexible dimensions**: ideal for any building with pit and headroom limitations for rated load from 450kg to 1.000kg.

FlexyLIFT means **flexible machine room location**: one product, two solutions;

FlexyLIFT MRL, no machine room at all!

FlexyLIFT MR, minimum requirement for a small cabinet—it includes the power unit and the controller—and almost no need for pit depth.

FlexyLIFT means flexible, **state of the art**, **environment friendly**, hydraulic solution by KLEEMANN, Your 1st Choice in Lifts.

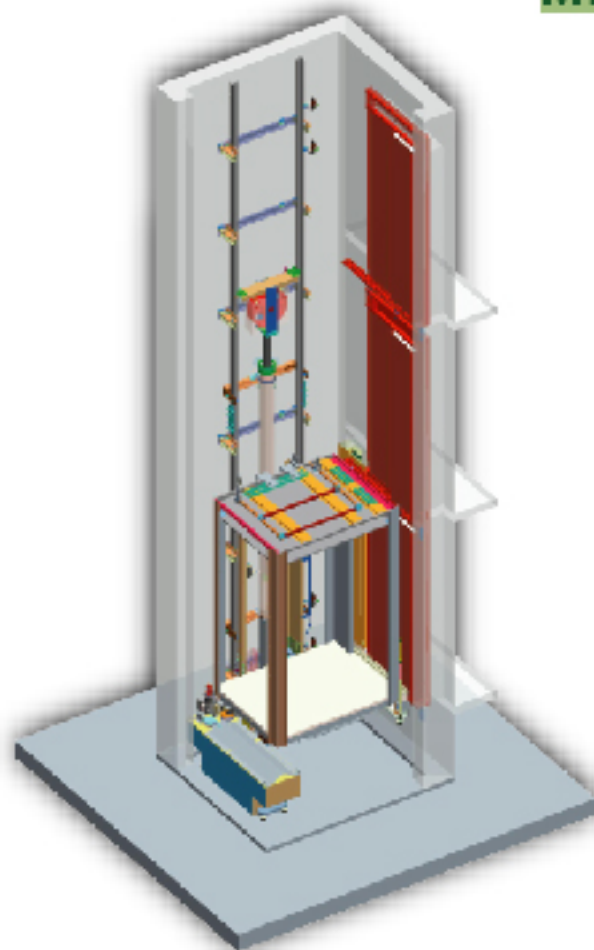
THE FEATURES OF FlexyLIFT

- Minimum requirements for shaft pit dimensions: 350mm for FlexyLIFT MR and 900mm for FlexyLIFT MRL
- Minimum requirements for headroom dimensions: 2600mm
- High quality electronic valve at the power unit
- Retractable cabin roof balustrade (complete with electric sensor)
- Shaft pit prop (complete with electric sensor)
- Telescopic toeguard (complete with electric sensor)
- Exceptional leveling accuracy (max $\pm 3\text{mm}$) and very smooth ride
- Automatic emergency evacuation
- Ease of installation
- Mechanism to ensure installer's safety when operating in the shaft pit or on the top of the cabin
- Rated load from 450kg up to 1.000kg
- Type Examination Certificate according to Directive 95/16 EC
- Noiseless operation
- Max speed: 1,0 m/sec



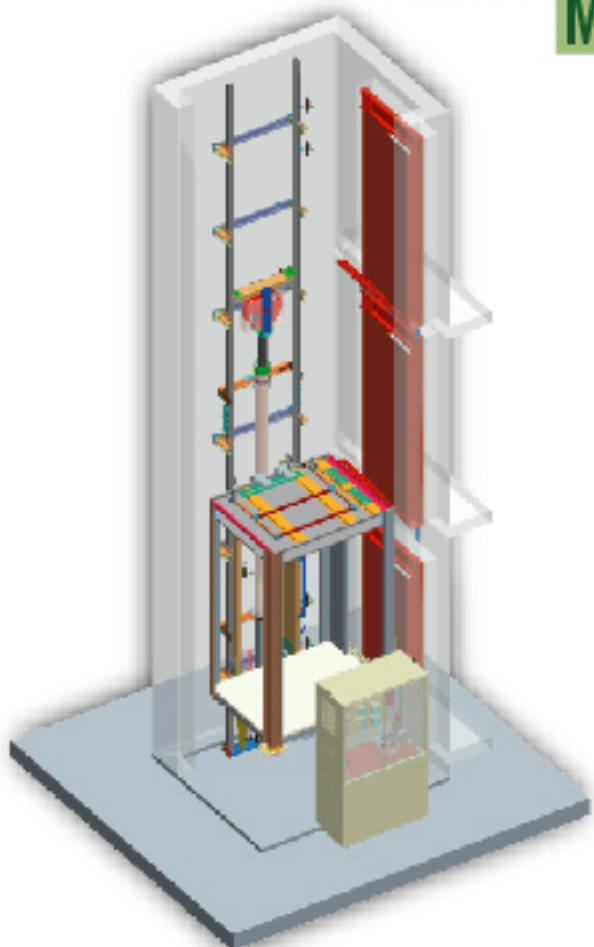
FlexyLIFT

FlexyLIFT MRL



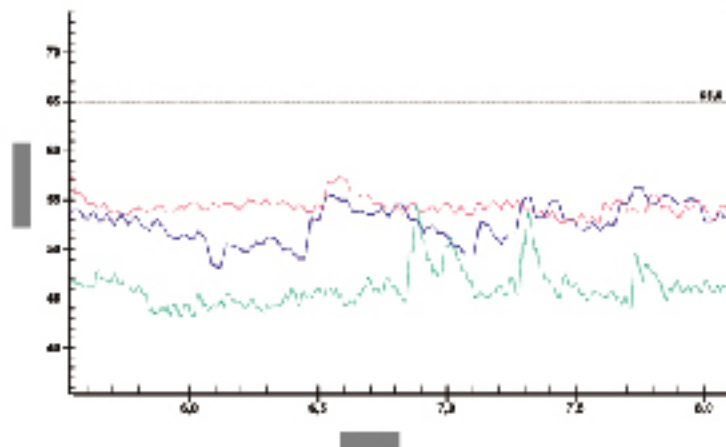
Technical specifications	FlexyLIFT MRL 450	FlexyLIFT MRL 630	FlexyLIFT MRL 1000
Rated load (Kg)	450	630	1000
Persons	6	8	13
Max. travel (m)	25	22	30
Max. speed (m/sec)	1,0		
Min. pit depth (mm)	900	900	1000
Min. headroom (mm)	2600		
Max. suspended load (Kg)	1160	1790	2200
Max. cabin weight (including car door) (Kg)	570	1020	1020
Ram (mm)	∅ 120	∅ 120	∅ 150

FlexyLIFT MR



Technical specifications	FlexyLIFT MR 450	FlexyLIFT MR 630	FlexyLIFT MR 1000
Rated load (Kg)	450	630	1000
Persons	6	8	13
Max. travel (m)	25	22	30
Max. speed (m/sec)	1,0		
Min. pit depth (mm)	350	350	400
Min. headroom (mm)	2600		
Max. suspended load (Kg)	1160	1790	2200
Max. cabin weight (including car door) (Kg)	570	1020	1020
Ram (mm)	∅ 120	∅ 120	∅ 150

SOUND LEVEL MEASUREMENTS



■ Operation in ascent direction with nominal speed
■ Operation in ascent direction on startup
■ Operation in descent direction

Sound in cabin

	FlexyLIFT 600	FlexyLIFT 1000
Operation in ascent direction with nominal speed	52 dB	54 dB
Operation in ascent direction on startup	55 dB	58 dB
Operation in descent direction	49 dB	52 dB

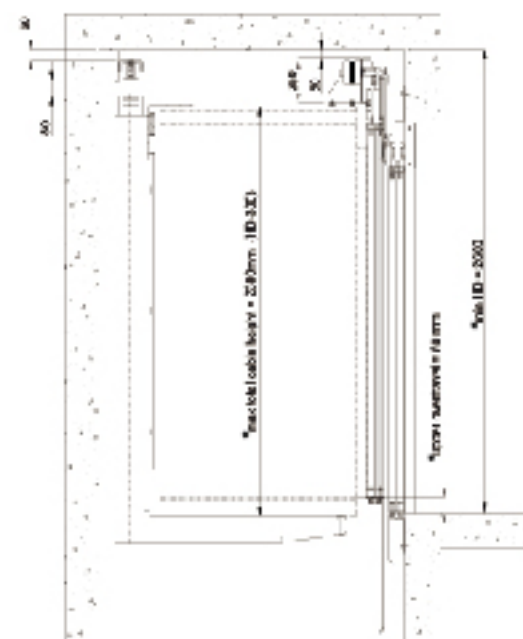
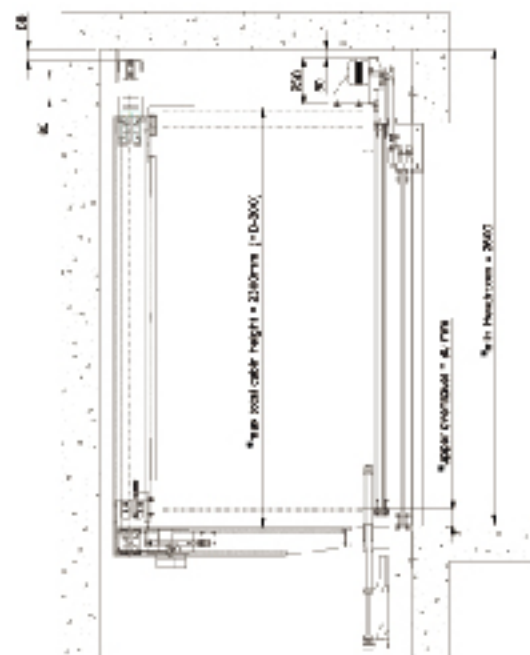
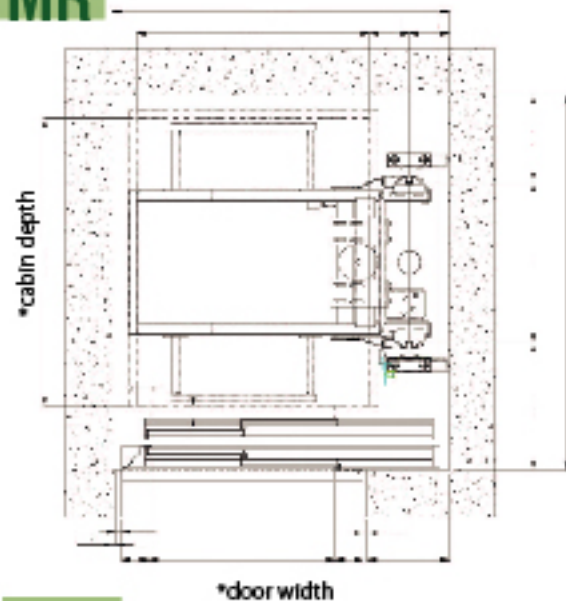
Sound in front of shaft door / controller cabinet

	FlexyLIFT 600	FlexyLIFT 1000
Operation in ascent direction with nominal speed	54 dB	56 dB
Operation in ascent direction on startup	57 dB	59 dB
Operation in descent direction	50 dB	53 dB

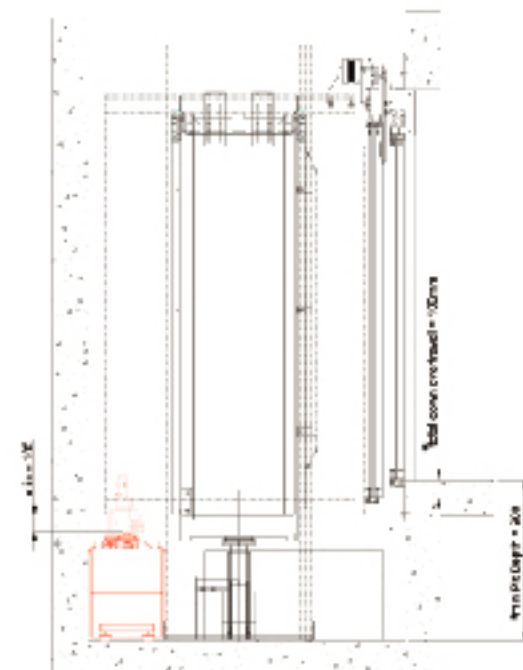
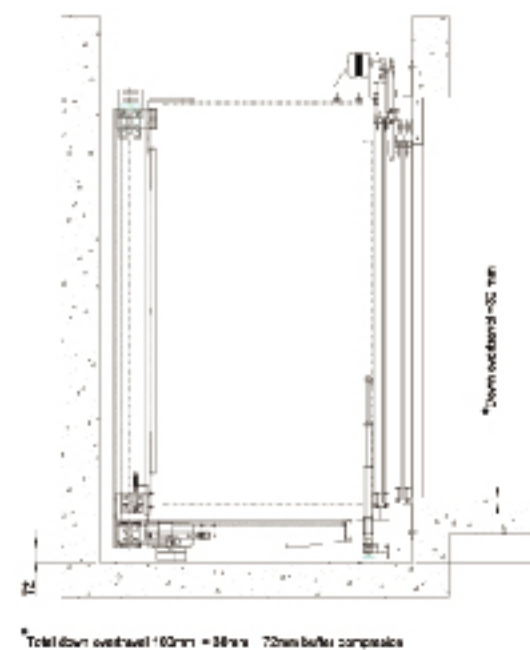
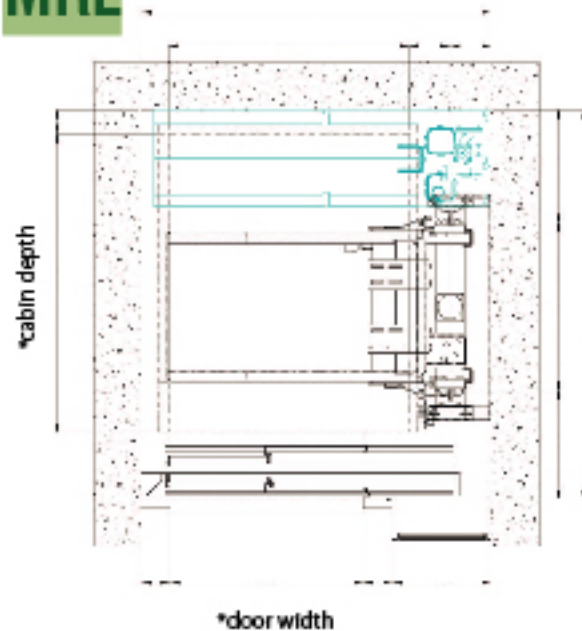
Sound level measurements effectuated in factory conditions via the EVA-625 measurement device in accordance to the ride quality standard ISO 18738

PLANNING DATA

FlexyLIFT MR



FlexyLIFT MRL



*according to site

FlexyLIFT MR

FlexyLIFT MRL

FlexyLIFT IS OFFERED WITH:

KLEEMANN ELECTRONIC VALVE C-LRV



VVVF AUTOMATIC DOORS



EcoLogic KIT*

Environment friendly features such as:

- Biodegradable hydraulic oil
- Low energy consumption LED lights for both cabin and shaft lighting
- Special energy saving functions of the controller, during "STAND BY" mode

*offered as optional KIT

VARIOUS CABINS IN ATTRACTIVE DESIGNS



LARGE VARIETY OF COPs LOPs



- Guaranteed compatibility of all components
- Detailed installation, operation and maintenance manuals
- Functional packing design

FlexyLIFT



Your 1st Choice in Lifts

KLEEMANN SOLUTIONS

COMPLETE LIFT SYSTEMS

- MACHINE ROOM HYDRAULIC / TRACTION SYSTEMS
- MACHINE ROOM LESS HYDRAULIC / TRACTION SYSTEMS
- MAISONLIFT
- EARTHQUAKE RESISTANT LIFT
- COMPACT, DUMBWAITER

LIFT ASSEMBLIES

- CABINS
 - PASSENGER CABINS
 - FREIGHT / GOODS CABINS
 - FIREFIGHTING CABINS
 - PANORAMIC CABINS
- DOORS
 - AUTOMATIC DOORS WITH VVVF OPERATOR
 - FOLDING DOORS
 - SEMI-AUTOMATIC LANDING DOORS
 - CIRCULAR DOORS
 - MODERNIZATION DOORS
- ELECTRONICS
 - CONTROLLERS
 - CAR AND LANDING OPERATING PANELS
 - PRE-WIRING
- HYDRAULIC ELEVATION SYSTEMS
 - PISTON AND CYLINDER ASSEMBLY
 - POWER UNITS
 - CAR FRAMES
 - GUIDE RAILS
 - WIRE ROPES
 - HYDRAULIC OIL
- TRACTION ELEVATION SYSTEMS
 - TRACTION MACHINES
 - CAR SLINGS
 - COUNTERWEIGHT SLINGS
 - GOVERNORS
 - GUIDE RAILS
 - WIRE ROPES



Head offices - Export Sales: Kilik Industrial Area, P.O. Box 25, Post Code 61 100, Kilik, Greece,
Operator: +30 23410 38 100, Fax: +30 23410 38 200, E-Mail: headoffice@kleemann.gr



Kilik Industrial Area, Post Code 61 100, Kilik, Greece, Operator: +30 23410 75 730, Fax: +30 23410 75 733,
E-Mail: commercial@klefer.gr, www.klefer.gr



Yukari Dudullu, Türker, Cad No 34 34775, Ümraniye İstanbul TÜRKİYE, Tel.: +90 216 4662267, Fax: +90 216 4662285,
E-Mail: info@kleemannturk.com



Golubinačka b.b, Šimanovci, Beograd Serbia - Montenegro, Tel/fax (+381 22) 80-280, 80-090,
E-Mail: office@kleemann.co.yu



63 Marasesti Blvd. Sector 4, Bucharest, Romania, Tel.: 0040 21 3367739, Fax: 0040 21 3374428

www.kleemann.gr